

Подвижно



1. В кра - е Ку - бан - ском как впреж - ни - е го ды гар -



(муж. хор) И - гра - ют!

мо - - ни иг - ра - ют.



Слы - шат - ся воль - ны - е пес - ни ка - за - чьи, час -



(муж. хор) Взле - та - ют!

ту - - шки взле - та - ют.

17

С.
А.

Т.
Б.

Две сти гар мо - шек на у - ли - цу выш - ли по - хо - жих и раз - ных. Вет - ка - ми

25

ма - шут че - реш - ней и виш - ней, при - ве - тству - я празд - ник. Ку -

32

бань гар - монь, гар - монь ку - бань о - пять, о - пять со мно - ю, гар -

36

лю блю люб-лю!

монь Ку-бань, ку-бань гар-монь лю-блю вас всей душо-ю.

42

Ну-ка встань, ладь зат-ронь, пляши, Ку-бань, играй, гар-монь! Эх, хе хе

51

3. Пляшет, пляшет вся полянка, дай огня гар-монь Ку-бан-ка! Вы-давай на-

56

всю катушку под при-топы и дробушку. Пе-ре-бор, на пе-ре-бор,

61

гар-монис-ты на под бор! Как услышу я гар-мош-ку, бро-шу чаш-ку, бро-шу лож-ку!

Казачи в Берлине

Handwritten musical score for a piano piece, measures 1-6. The score includes staves for right hand (RH), left hand (LH), and grand staff (GS). The key signature is B-flat major (two flats) and the time signature is 4/4. The music features chords, arpeggios, and tremolos. Dynamics include 'f' (forte).

Вступление + окончание

Handwritten musical score for the introduction and ending of the piece, measures 7-10. The score includes staves for right hand (RH) and left hand (LH). The key signature is B-flat major and the time signature is 4/4. The music features chords and a melodic line in the right hand. Dynamics include 'f' (forte).

Handwritten musical score for guitar, consisting of six systems of staves. The first system includes a treble clef staff with a melodic line and a bass clef staff with chords. The second system has a treble clef staff with a melodic line and a bass clef staff with chords, including a 'D7' chord. The third system has a treble clef staff with a melodic line and a bass clef staff with chords, including 'Cm', 'Gm', and 'D7' chords. The fourth system has a treble clef staff with a melodic line and a bass clef staff with chords. The fifth system has a treble clef staff with a melodic line and a bass clef staff with chords. The sixth system has a treble clef staff with a melodic line and a bass clef staff with chords. The score includes various musical notations such as notes, rests, and accidentals.

Окончание

Handwritten musical score for guitar, consisting of two systems of staves. The first system has a treble clef staff with a melodic line and a bass clef staff with chords. The second system has a treble clef staff with a melodic line and a bass clef staff with chords. The score includes various musical notations such as notes, rests, and accidentals.

1 | 3 | - без повтора на проигрыш (вступление) (3)

Musical staff with treble clef, key signature of two flats, and a 3-measure rest.

Musical staff with treble clef, key signature of two flats, and guitar chords: Gm, D7, G7, Cm, Cm, Gm.

Musical staff with treble clef, key signature of two flats, and a melodic line with eighth notes and a slur.

Musical staff with bass clef, key signature of two flats, and a melodic line with quarter notes.

Musical staff with treble clef, key signature of two flats, and a 3-measure rest.

Musical staff with treble clef, key signature of two flats, and guitar chords: A7, D, with a melodic line and a slur.

Musical staff with treble clef, key signature of two flats, and a melodic line with eighth notes and a slur.

Musical staff with treble clef, key signature of two flats, and a melodic line with eighth notes.

Musical staff with bass clef, key signature of two flats, and a melodic line with quarter notes.

This is a handwritten musical score for guitar, consisting of 12 staves. The music is written in a key with one flat (B-flat) and a 3/4 time signature. The score is divided into two main sections by a double bar line. The first section contains the main melody and accompaniment. The second section features a more complex, rhythmic melody with many beamed notes. Chord diagrams are provided for the first section: Cm, Gm, D7, and Gm. The notation includes various rhythmic values, accidentals, and articulation marks. There are some corrections and erasures throughout the piece, particularly in the second section.

Cm

Gm

D7

Gm

5

2

Handwritten musical notation on a single staff. It begins with a treble clef and a key signature of two flats (B-flat and E-flat). The notation includes a sequence of notes with sharp signs, followed by a measure with a '7' and a fermata. A bracket above the first few notes is labeled '2.'. The staff ends with a double bar line.

Handwritten musical notation on two staves. The top staff has a treble clef and a key signature of two flats. It contains several measures of notes, some with sharp signs, and a measure with a '7' and a fermata. A bracket above the first few notes is labeled '12.'. The bottom staff has a bass clef and a key signature of two flats, with notes and sharp signs. A bracket above the first few notes is labeled '2.'. The system ends with a double bar line.

Handwritten musical notation on two staves. The top staff has a treble clef and a key signature of two flats. It contains several measures of notes with sharp signs. A bracket above the first few notes is labeled '2.'. The bottom staff has a bass clef and a key signature of two flats, with notes and sharp signs. A bracket above the first few notes is labeled '2.'. The system ends with a double bar line.

Handwritten musical notation on a single staff with a bass clef and a key signature of two flats. It contains several measures of notes with sharp signs. A bracket above the first few notes is labeled '2.'. The staff ends with a double bar line.

Handwritten musical notation on two staves. The top staff has a treble clef and a key signature of two flats. It contains several measures of notes with sharp signs. The bottom staff has a bass clef and a key signature of two flats, with notes and sharp signs. A bracket above the first few notes is labeled '2.'. The system ends with a double bar line.

Handwritten musical notation on a single staff with a treble clef and a key signature of two flats. It contains several measures of notes with sharp signs. A bracket above the first few notes is labeled '2.'. The staff ends with a double bar line.

Handwritten musical notation on two staves. The top staff has a treble clef and a key signature of two flats. It contains several measures of notes with sharp signs. The bottom staff has a bass clef and a key signature of two flats, with notes and sharp signs. A bracket above the first few notes is labeled '2.'. The system ends with a double bar line.



Handwritten musical score on ten staves. The notation includes treble clefs, a key signature of one flat (B-flat), and a time signature of 4/4. The score is divided into two systems of five staves each. The first system contains measures 1 through 4, and the second system contains measures 5 through 8. The notation features various note values (quarter, eighth, and sixteenth notes), rests, and complex chordal structures. Some notes are marked with a plus sign (+) and a sharp (#). The handwriting is fluid and characteristic of a composer's sketch.

A handwritten musical score for guitar, consisting of ten staves. The score is divided into two systems of five staves each. The first system (staves 1-5) contains a complex arrangement of notes, including many beamed sixteenth notes and chords, with some notes enclosed in boxes. The second system (staves 6-10) features a more sparse arrangement with fewer notes and some chords. The notation includes various rhythmic values, accidentals (sharps and flats), and dynamic markings. The paper shows signs of age and wear.

Handwritten musical notation on a single staff, featuring a treble clef and a key signature of two flats (B-flat and E-flat). The notation includes a whole rest followed by a measure containing a complex chordal structure with various accidentals (sharps and flats) and stems.

Two empty musical staves, each with a treble clef and a key signature of two flats, positioned above the main body of the score.

Handwritten musical notation on a single staff, featuring a treble clef and a key signature of two flats. The notation includes a complex chordal structure with various accidentals and stems, followed by a measure with a whole rest.

Handwritten musical notation on a single staff, featuring a bass clef and a key signature of two flats. The notation includes a series of quarter notes with stems pointing downwards.

Handwritten musical notation on a single staff, featuring a treble clef and a key signature of two flats. The notation includes a complex chordal structure with various accidentals and stems, followed by a measure with a whole rest.

Two musical staves. The top staff has a treble clef and a key signature of two flats, containing a whole note. The bottom staff has a bass clef and a key signature of two flats, containing a whole note with a sharp sign.

Two musical staves. The top staff has a treble clef and a key signature of two flats, containing a whole note with a sharp sign. The bottom staff has a bass clef and a key signature of two flats, containing a whole note with a sharp sign.

Two musical staves. The top staff has a treble clef and a key signature of two flats, containing a whole note with a sharp sign. The bottom staff has a bass clef and a key signature of two flats, containing a series of quarter notes with stems pointing downwards.

9

4

1

4

G_m KAK (1) D₇

3

KAK (1)

Handwritten musical notation for the first system. It features a treble clef, a key signature of one flat (Bb), and a bass clef with a 4/8 time signature. The treble staff contains a whole rest. The bass staff contains a melody of eighth notes: G4, A4, B4, C5, B4, A4, G4, F4, E4, D4.

Handwritten musical notation for the second system. It features a treble clef, a key signature of one flat (Bb), and a series of chords: G7, Cm, Cm, Gm, A7, D7.

Two empty musical staves, one with a treble clef and one with a bass clef.

Handwritten musical notation for the third system. It features a bass clef, a key signature of one flat (Bb), and a melody of eighth notes: G4, A4, B4, C5, B4, A4, G4, F4, E4, D4.

Four empty musical staves.

Казачи в Берлине

По Берлинской мостовой
Кони шли на водопой.
Шли, потряхивая гривой,
Кони-дончаки.
Распеваёт верховой -
Эх, ребята, не впервой
Нам поить коней казацких
Из чужой реки.

Припев: Казаки, казаки,
Едут, едут по Берлину
Наши казаки.

Он коней ведёт шажком,
Видит - девушка с флажком
И с косою под пилоткой
На углу стоит.
С тонким станом, как лоза,
Синевой горят глаза.
Не задерживай движенья -
Казачу кричит.

Задержаться он бы рад,
Но, поймав сердитый взгляд,
Ну-ка, рысью - с неохотой
Крикнул на скаку.
Лихо конница прошла,
А дивчина расцвела.
Нежный взор не по уставу
Дарит казачу.

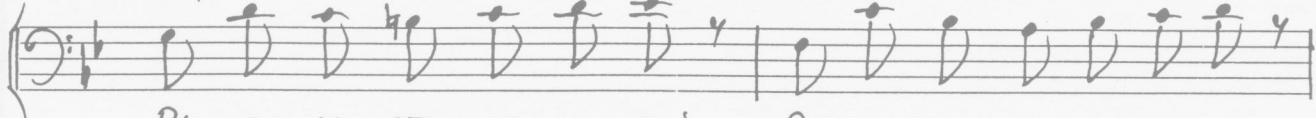
По берлинской мостовой
Снова едет верховой,
Про дивчину, про землячку
Говорит друзьям:
"Как вернусь на тихий Дон,
Как вернусь в родимый дом,
Синеглазую казачку
Снова встречу там..."



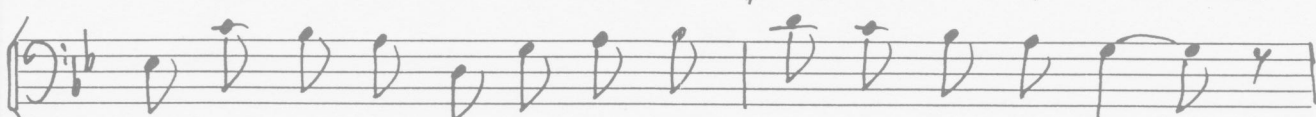
1. ПО БЕР-ЛИН-СКОЙ МОС-ТО-ВОЙ КО-НИ КОЛИ НА ВО-ДО-ПОЙ,



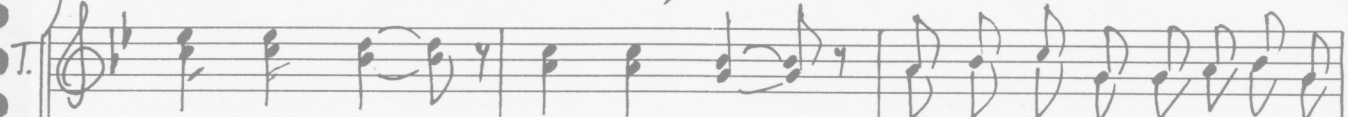
ШЛИ, ПОТ-РЯ-ХИ-ВА-Я ГРИ-ВОЙ, КО-НИ - ДОН-ЧА-КИ



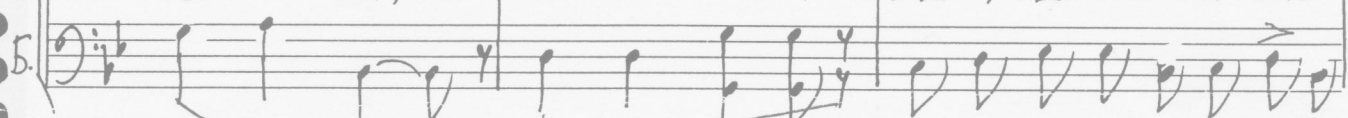
РАС-ПЕ-ВА-ЕТ ВЕР-ХО-ВОЙ: Эх, РЕБЯ-ТА, НЕ ВПЕР-ВОЙ



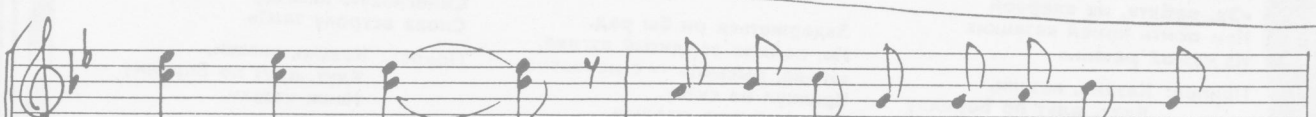
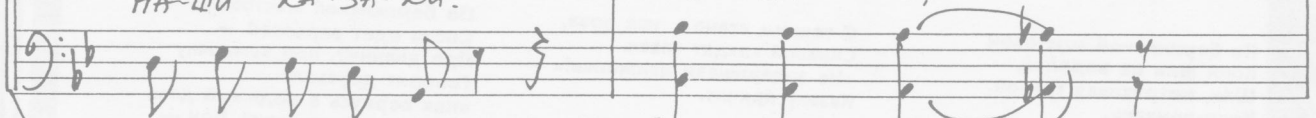
НАМ ПО-ИТЬ КО-НЕЙ КА-ЗАЦ-КИХ ИЗ ЧУ-ЖОЙ РЕ-КИ...



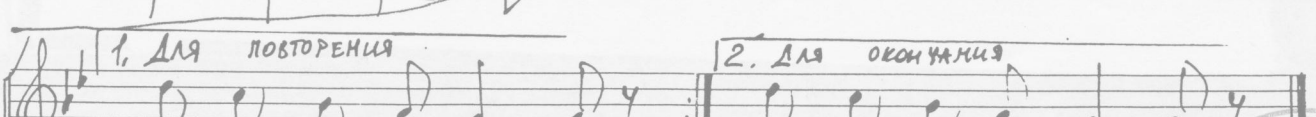
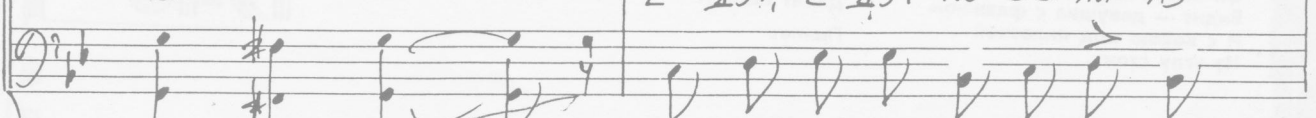
КА-ЗА-КИ, КА-ЗА-КИ ЕДУТ, ЕДУТ ПО БЕРЛИНУ



НА-ШИ КА-ЗА-КИ. КА ЗА-КИ,



КА ЗА-КИ Е-ДУТ, Е-ДУТ ПО БЕРЛИ-НУ



1. ДЛЯ ПОВТОРЕНИЯ НА-ШИ КА-ЗА-КИ. 2. ДЛЯ ОКОНЧАНИЯ // НА-ШИ КА-ЗА-КИ

